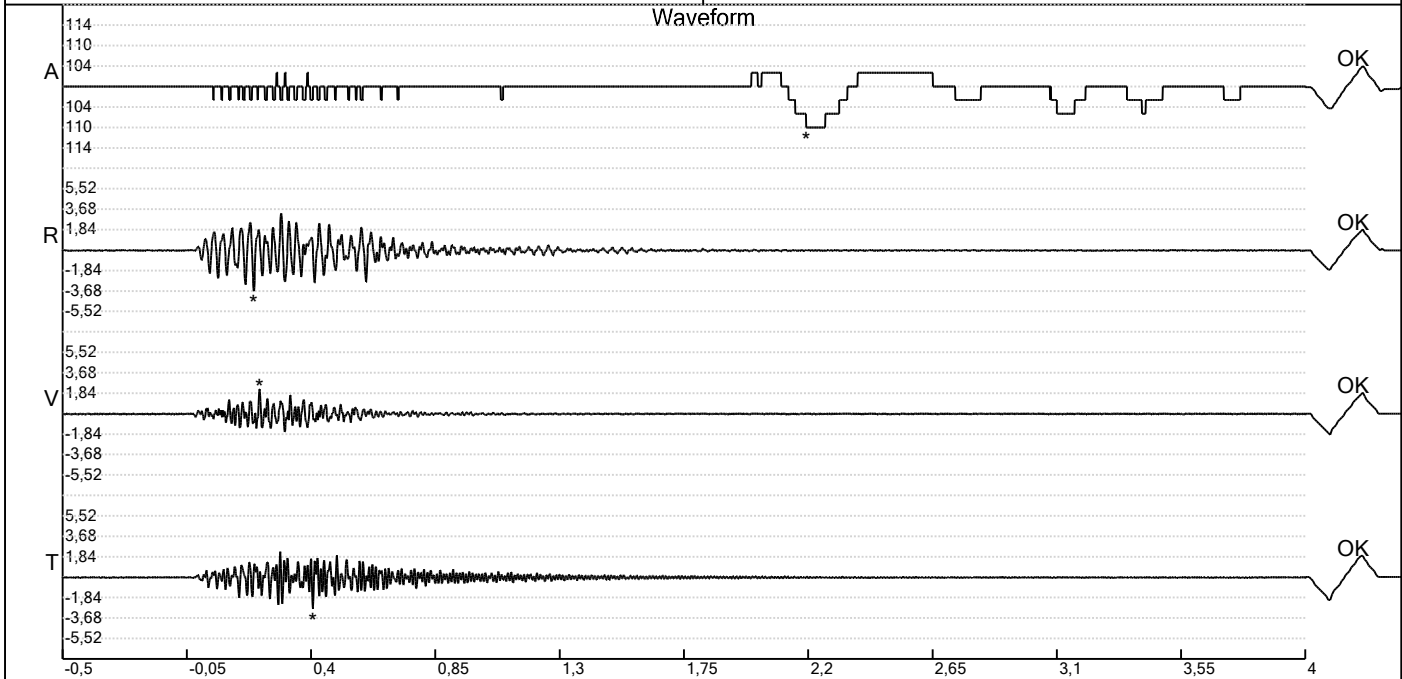


Carrière de BRS
Aywaille -6
Tir du 27/08/2025
Sismographe placé au
261 Halleux
4710 Comblain-au-Pont

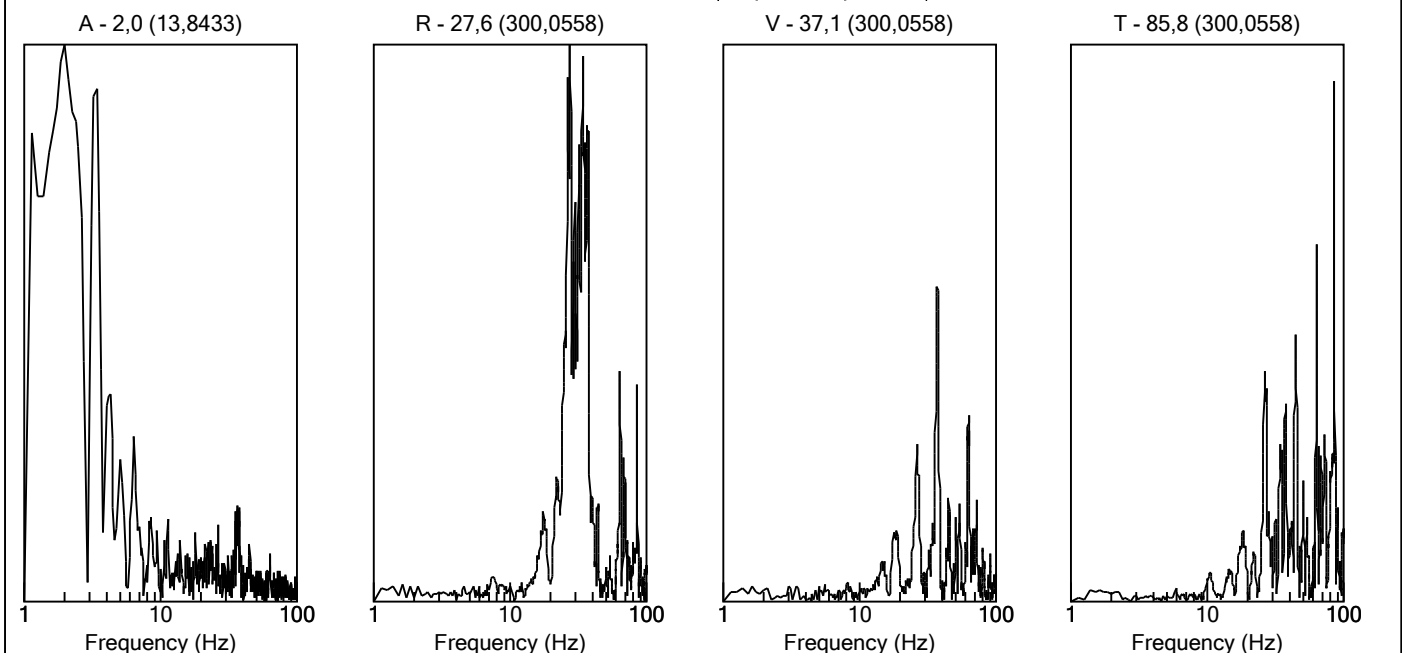
Record: 1789202508271301121.dtb
Number: 121
Seismograph: Mini-Seis 1789
Type of Record: Waveform
Date: 27-08-25 13:01:00
Duration: 4,50 Seconds
Sample Rate: 1024
Pre-Trigger: 0,5 Seconds
Seismic Trigger: 0,508 mm/s
Acoustic Trigger: 142,1 dB
Seismic Gain: 63,5
Acoustic Gain: 141,9 dB
Voltage: 6,5

Peaks and Frequencies
PPV Maximum (Geo #1): 3,68 mm/s
Acoustic #1: 109,5 dB @ 2,6 Hz (2,192383 s)
Radial #1: 3,68 mm/s @ 39,3 Hz (0,1923828 s)
Vertical #1: 2,22 mm/s @ 56,8 Hz (0,2128906 s)
Transverse #1: 2,86 mm/s @ 64,0 Hz (0,40625 s)
Last Calibration Date:

Graph Information
Time Range: -0,499 s to 4 s, Intervals: 0,4499 Seconds



Fast Fourier Transform (Amplitude Spectrum)

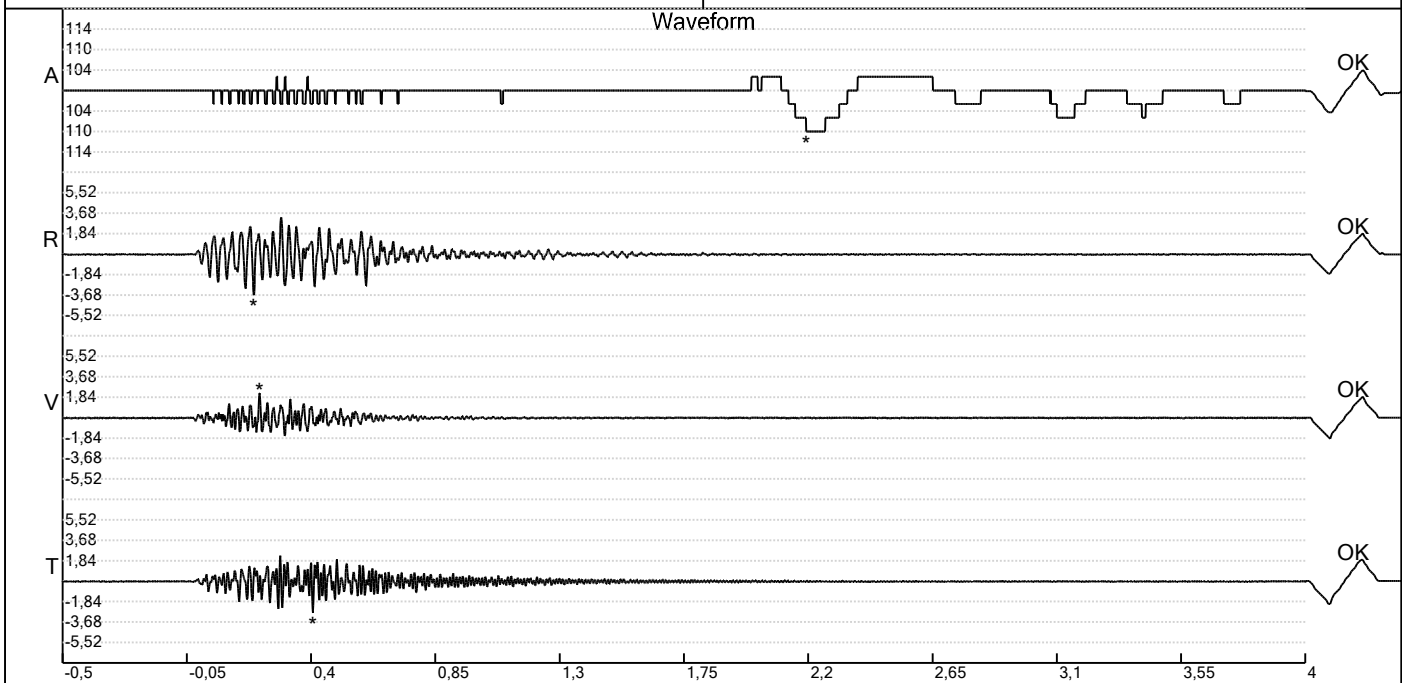


Carrière de BRS
 Aywaille -6
 Tir du 27/08/2025
 Sismographe placé au
 261 Halleux
 4710 Comblain-au-Pont

Record: 1789202508271301121.dtb
 Number: 121
 Seismograph: Mini-Seis 1789
 Type of Record: Waveform
 Date: 27-08-25 13:01:00
 Duration: 4,50 Seconds
 Sample Rate: 1024
 Pre-Trigger: 0,5 Seconds
 Seismic Trigger: 0,508 mm/s
 Acoustic Trigger: 142,1 dB
 Seismic Gain: 63,5
 Acoustic Gain: 141,9 dB
 Voltage: 6,5

Peaks and Frequencies
 PPV Maximum (Geo #1): 3,68 mm/s
 Acoustic #1: 109,5 dB @ 2,6 Hz (2,192383 s)
 Radial #1: 3,68 mm/s @ 39,3 Hz (0,1923828 s)
 Vertical #1: 2,22 mm/s @ 56,8 Hz (0,2128906 s)
 Transverse #1: 2,86 mm/s @ 64,0 Hz (0,40625 s)
 Last Calibration Date:

Graph Information
 Time Range: -0,499 s to 4 s, Intervals: 0,4499 Seconds



Velocity vs. Frequency (DIN 4150-3 Tab 1)

